

NAECC NEWSLETTER - SPRING 2025

Friday, March 7, 2025

NAECC NEWS

SEEKING VOLUNTEERS



The 2025 growing season is starting and the NAECC seeking volunteers to assist with gardening tasks.

[CLICK HERE](#)

NAECC is seeking volunteers to assist with our gardening projects this spring which include the following:

- Three Sister Garden
- Community Garden
- Perennials

Duties include garden preparation, planting, watering, and general upkeep. Sign up at "Click Here". For more information, contact NAECC GA Alyssa Nez at anez@purdue.edu.



Native American Educational
and Cultural Center

SPRING BREAK 2025 HOURS OF OPERATION

MON., 3/17 THRU FRI., 3/21

9 AM - 4 PM



903 Fifth Street
West Lafayette, IN 47906



naecc@purdue.edu



(765) 494-4540



www.purdue.edu/naecc



@Purdue NAECC

The NAECC is part of the Office of
Diversity, Inclusion, and Belonging
Office of the Provost

Equal Access - Equal Opportunity University



SCAN HERE

to access the NAECC website
for events and updates

In accordance with Purdue policies, all persons have equal access to Purdue University's educational programs, services and activities, without regard to race, religion, color, sex, age, national origin or ancestry, genetic information, marital status, parental status, sexual orientation, gender identity and expression, disability or status as a veteran.

See Purdue's [Nondiscrimination Policy Statement](#). If you have any questions or concerns regarding these policies, please contact the Office of the Vice President for Ethics and Compliance at atvpec@purdue.edu or 765-494-5830.

NAECC EVENTS AND PROGRAMS



PURDUE
UNIVERSITY

Native American Educational
and Cultural Center

NAECC PROGRAMS - MARCH 2025

NAECC Craft Circle:
**Diamond
Painting**

Wednesday, 3/5
2:00 - 4:00 pm

***Crafting with CARE:**
**Canvas
Painting**

Tuesday, 3/11
1:00 - 2:00 pm

Spilling the TEA:
**Indigenous Food
Sovereignty**

Wednesday, 3/12
12:00 - 1:00 pm

All NAECC programs are FREE and OPEN to the campus community. Click on QR code or visit the NAECC website for details.

*Event Co-Sponsor
Purdue CARE



903 Fifth Street
West Lafayette, IN 47906
(765) 494-4540



naecc@purdue.edu



www.purdue.edu/naecc

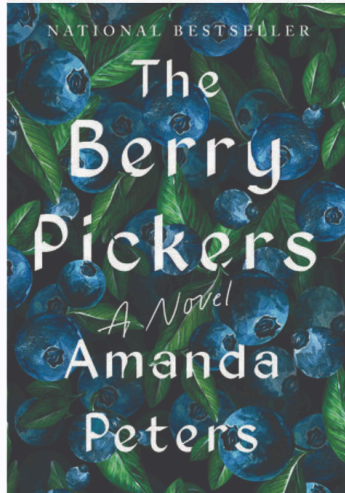


@Purdue NAECC

SCAN HERE FOR NAECC EVENTS



Join us next week for the ***Crafting with CARE: Canvas Painting*** on Tuesday, March 11, 2025 starting at 1:00 to 2:00 pm. Visit the NAECC website for more information.



NAECC SPRING BOOK DISCUSSION

Lunch Discussion

Wednesday, April 9 | 12 noon - 1:30 pm
Purdue NAECC

Virtual Discussion

Tuesday, April 15 | 3:00 - 4:30 pm

Join us for this book discussion featuring
"The Berry Pickers" by author Amanda Peters (Mi'kmaq)

Event Co-Sponsors

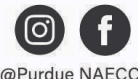


Purdue University Global holds itself
accountable to foster a culture that
promotes diversity and inclusion,
offering an environment that is fair,
equitable, and accessible for all.

All NAECC events are FREE and OPEN to the campus community.
Pre-registration is required. Click on QR code or visit the NAECC website to register.

903 Fifth Street
West Lafayette, IN 47906
(765) 494-4540

naecc@purdue.edu
www.purdue.edu/naecc



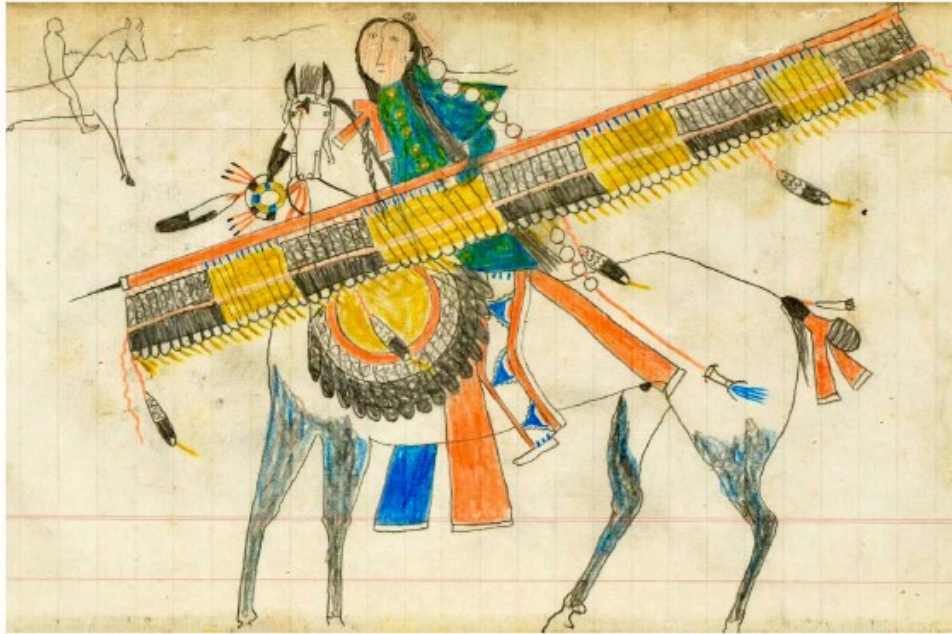
@Purdue NAECC



All NAECC programs and events are FREE and OPEN to the campus community. Visit our [website](https://www.purdue.edu/naecc) for updated information and details.

WARRIORS IN THE ARCHIVE:

INDIGENOUS PLAINS ARTISTS, SOVEREIGNTY, AND THE RECLAMATION OF HISTORY



Unknown Southern Cheyenne or Arapaho artist, page 79 from the Frank Henderson ledger, museum working title "A Crazy Dog Society Warrior", active 1870s-1880s, Central Plains, Lansburgh Collection, Hood Museum, Dartmouth College.

GUEST LECTURE BY MARY PETERSON ZUNDO, PH.D., ABD
WEDNESDAY, MARCH 26, 2025, 5:30 PM
YUE-KONG PAO HALL, ROOM B157

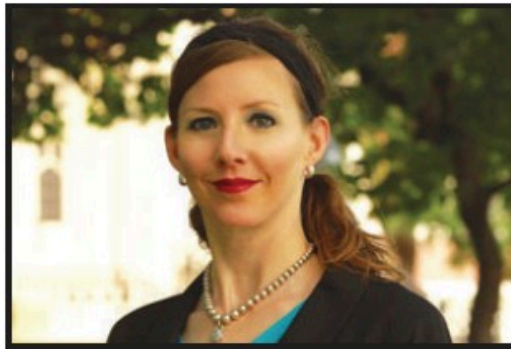


This event is co-sponsored by The Native American Educational and Cultural Center and Patti and Rusty Rueff School of Design, Art, and Performance

PPA AT THE NAECC

On the following TUESDAYS 3-4 PM:

1/21, 2/4, 2/11, 2/25, 3/11, 3/25, 4/8, 4/22



SENIOR PRE-PROFESSIONAL ADVISOR

CARA HINES-PHAM

***STOP BY FOR A
QUICK CHAT, NO
APPOINTMENT
NEEDED!***

GET HELP WITH:

- *PRE-MED*
- *PRE-LAW*
- *PRE-VET MED*
- *PRE-DENT*
- *PRE-OPTOMETRY*
- *PRE-HEALTH*



PURDUE OWL APPOINTMENTS

**WALK-INS WELCOME EVERY WEDNESDAY AT THE
NAECC FROM 1:00PM - 3:00PM**

WHAT CAN THE PURDUE OWL HELP YOU WITH?

Thousands of Purdue students, especially good writers, come to the OWL because they know it's useful to talk about what they're writing and to get some feedback. Writers bring in papers from courses in biology, engineering, political science, technology, communications, and many other courses besides English. They also come in to work on resumes and job applications, internship and co-op reports, or any other writing task they're working on, including papers for graduate seminars. We help Purdue students, faculty, staff and even those learning English as a second language.

MEET THE PURDUE OWL CONSULTANTS



Jacqueline Borchert

she/her

Professional Writing Specialist

Jacqueline Borchert is a Professional Writing Specialist who has been a preschool, middle school, and English Language Learner teacher. Her current research focuses on linguistic justice and multiracial identity. She enjoys playing DND, reading, and baking.



Jeffrey Chen

he/him

Undergraduate Writing Consultant

Jeffrey is an Undergraduate Writing Consultant. He is majoring in Professional Writing and Creative Writing. Some of his hobbies are ceramics, violin, and Kendo.



On-Campus Writing Lab

PURDUE NEWS

BRAINSTORM & BITES

WORK-STUDY IDEAS SESSION

Interested in learning more about work-study jobs, giving your resume a boost, and gaining important networking connections? Talented in marketing, social media, and video editing? Join us on Zoom or in Young Hall room 268. Light refreshments provided. Email Nicole McCabe at rice99@purdue.edu with any questions. Don't miss out on free food & a chance to shape the future of work-study!

ROLE PLAYING & EMPATHY MAPPING

March 27th 12-1

Put yourselves in the shoes of different student personas and identify what would catch their attention. What types of outreach, incentives, or messaging would have caught your eye?

SOCIAL MEDIA CHALLENGE

April 10th 12-1

If we had no budget, how could we go viral? Brainstorm engaging TikTok/Reels, memes, or student-led testimonials to inform other students of work-study opportunities.

SHARK TANK GAMIFICATION

April 23rd 12-1

Design an interactive game or scavenger hunt to encourage students to explore work-study options and pitch them to the team for feedback.

Zoom Link



Center for Career Opportunities

UR GLOBAL

SPRING 2025

JANUARY

22ND FIND YOUR FRIENDS:
SPEED FRIENDING

26TH ICE SKATING WITH URMIC

30TH SELF-CARE & CHILL



SAVE THE DATES!

"SUBJECT TO CHANGE"



SPREAD THE LOVE FOR
VALENTINE'S DAY

RACK N ROLL BOWLING

TEAM BUILDING WITH A TWIST

13TH

21ST

26TH

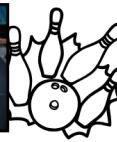
FEBRUARY

MARCH

1ST TRIP TO INDIANAPOLIS

7TH MARCH MADNESS:
INTERNATIONAL GAMES EDITION

26TH CLOVERS & CRAFTS



CULTURAL FEST:
FASHION, FOOD, & MORE

EOY OUTDOOR PARTY

5TH

23RD

APRIL



BOILERLINK: [UR GLOBAL CLUB](#)



@[UR_GLOBAL](#)



[UR GLOBAL PURDUE UNIVERSITY](#)



URGLOBAL@PURDUE.EDU

SCAN FOR MORE
INFORMATION AND
UPDATES ON UPCOMING
UR GLOBAL EVENTS!



 UR Global

University Residences Multicultural Connections

Spring

2025

Save the Dates

JAN 26	Ice Skating
JAN 31	Around the World Trivia
FEB 03	Black History Month Movie Night
FEB 12	Valentine's Day Event
FEB 20	Blanket Making
FEB 26	Global Chocolate Fest
MAR 08	HAAN Museum Trip
MAR 11	Holi T-Shirt Decorating
MAR 27	Spring Flowers & Crafts
APR 06	Indy Children's Museum Trip
APR 11	Game Night
APR 25	End of Semester Celebration

→ CONNECT WITH US



CARE Creative Art Show

SCAN THE QR CODE TO
LEARN MORE!



JOIN US FOR CARE'S ANNUAL CREATIVE
ART SHOW! WHETHER YOU'RE AN ARTIST
OR NOT, WE INVITE EVERYONE TO
EXPERIENCE AND CONTRIBUTE TO THIS
POWERFUL EXHIBITION IN HONOR OF
SEXUAL ASSAULT AWARENESS MONTH.

APRIL 1ST FROM
12:30-4:30PM @
KRACH LOBBY



Center for Advocacy,
Response & Education

STUDENT OPPORTUNITIES



Earn While You Learn!

PURDUE FEDERAL WORK STUDY PROGRAM

Federal Work-Study (FWS) is a form of financial aid that provides funding for on and off-campus jobs. It allows students to earn money to help pay for education expenses, potentially reducing their need for loans. The program is designed so that FWS funds and the student's employer share in paying the student's wages. Students gain valuable work experience, build professional skills, and explore career paths while earning money to support their education.

Benefits for Students

- Gain valuable hands-on experiences aligned with career goals.
- Alleviate financial burdens to focus more on studies and extracurricular activities.
- Learn vital skills like problem-solving and time management.
- Explore different career paths.

More Information

1. Eligibility:

To qualify for the Federal Work-Study Program, you must be a Purdue student enrolled at least half-time, demonstrate financial need through the FAFSA, and be offered a Federal Work-Study award by the Division of Financial Aid.

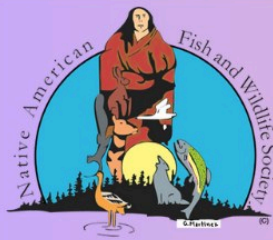
2. How to Apply:

To apply for the Federal Work-Study Program, accept your FWS award in the [myPurdue portal](#). Search for job opportunities at <https://www.cco.purdue.edu/Students/FederalWorkStudy>

3. Payment

Students receive bi-weekly paychecks for their work. Earnings can be used for day-to-day expenses and are not applied directly to tuition bills.





PROFESSIONAL DEVELOPMENT **WEBINAR** SERIES

CONFERENCE 101

MARCH 13, 2025 | 11 AM MOUNTAIN TIME

Come join to learn more about upcoming conference, how to prepare for a conference and details about our 2025 NAFWS Annual National Conference!



**REGISTER ON
ZOOM:**



Come, listen & have a chance at winning a prize!

CONTACT: ASHLEY MUELLER, EDUCATION COORDINATOR, AMUELLER@NAFWS.ORG



Indigitize Your Skills with AISES CLOUDS



Learn more at aises.org/clouds

Adobe

The AISES CLOUDS program, supported by the Adobe Foundation, is a FREE opportunity for AISES college members to strengthen your leadership and digital skills. Click [here](#) for more information.



Apply before it's too Late!

For the

2025-2026 COBELL ACADEMIC YEAR SCHOLARSHIP

Submit before March 31, 2025
11:59 PM MDT

	SUNDAY	MONDAY	TUESDAY	
	30	31	1	

The Cobell Scholarship is open! Click [here](#) to access the website for information, application guidelines, and deadlines.

COMMUNITY NEWS



LONG-SLEEVE DRIVE



Help us support farm workers across Indiana by donating long-sleeve shirts. These donations help protect farm workers from pesticide exposure and heat-related illness.

Please donate long-sleeved t-shirts that are:

- **light color**
- **natural fabric**

**Mar 31
to
April 14**

Drop-off Locations

AGAD office
615 W State St
West Lafayette, IN 47907

ABE Business office
225 S University St
West Lafayette, IN 47907

MESA office
915 W. State St Lily 4-L41
West Lafayette, IN 47907



Eiteljorg

Indigenous Food Sovereignty Dinner

with Chef Loretta Barrett Oden (Potawatomi)

3 Course Dinner

with Conversation and Book Signing

April 4, 2025 at 6pm

Pre-registration Required

In accordance with Purdue policies, all persons have equal access to Purdue University's educational programs, services and activities, without regard to race, religion, color, sex, age, national origin or ancestry, genetic information, marital status, parental status, sexual orientation, gender identity and expression, disability or status as a veteran. See Purdue's [Nondiscrimination Policy Statement](#). If you have any questions or concerns regarding these policies, please contact the Office of the Vice President for Ethics and Compliance at vpec@purdue.edu or 765-494-5830.

The NAECC acknowledges the traditional homelands of the Indigenous People which Purdue University is built upon. We honor and appreciate the Bodewadmik (Potawatomi), Lenape (Delaware), Myaamia (Miami), and Shawnee People who are the original Indigenous caretakers.



903 Fifth Street
West Lafayette, Indiana 47906



765-494-4540



naecc@purdue.edu



www.purdue.edu/naecc



Follow us on social media
[@PurdueNAECC](#)

The NAECC is part of the Office of
Diversity, Inclusion, and Belonging,
Office of the Provost



Extending our
appreciation to GM
for their corporate
sponsorship